

## Chapter – XII

### EMERGENCY LOGISTICS SERVICE

After every Disaster the Civil Defence organization has to organize a number of emergency services that will need substantial logistic support. In order to overcome difficulties of procurement and standardization, an emergency logistics service will be needed to keep the functional serviceability of the emergency services active post disasters.

The Emergency Logistics Service will arrange procurement of civil defence equipment and supplies as under and ensure its proper storage, issue, etc. :

- (a) All Civil Defence equipment authorized to respective services.
- (b) Large Scale Essential supplies, such as dry rations (Aatta, cereals, rice, sugar, salt etc.) required for mass feeding and any other requirement of the services projected.
- (c) Petrol, oil, lubricants for transport service.

*(Some requirements such as office stationary, clothing, etc. can be undertaken by the respective service organization with due approval of the C.D. Controller)*

#### Functions

The main functions of the Civil Defence Emergency Logistics Service are:

- (a) Estimation of the requirements of the various operating services.
- (b) Procurement of all equipment/essential supplies according to standard specifications
- (c) Storage of equipment & supplies
- (d) Distribution of equipment. (The necessary transport should be obtained from the Transport Service)
- (e) Maintenance of sufficient reserve of each item of equipment.
- (f) Inspection and accounting of equipment

#### Procurement Procedure

The Director of Civil Defence in each state and the local Civil Defence organizations are primarily responsible for the estimation, procurement, maintenance, distribution and accounting of the equipment required by the Civil Defence Services. The procedure given below should normally be followed in procuring the equipment.

- The head of civil defence emergency services will ascertain the equipment authorized for his service personnel and furnish the same to the Logistics Officer.
- The Logistics Officer will scrutinize such lists and prepare a consolidated list.
- The proposal for procurement will be submitted to the CD Controller or Director of Civil Defence, for approval and sanction.
- The Logistics Officer will invite quotations from various suppliers for procurement of equipment. In case of post disaster, emergency purchases after duo approval of the CD Controller can be undertaken.
- The Logistics Officer should assess the source of (where necessary, with the help of the appropriate Department of the State Government) the equipment required by the Civil Defence Services and decide whether such equipment should be obtained locally, or from other states or should be imported from foreign countries. In case particular equipment of approved specifications is obtainable locally, he should place an order on the local Government agency normally responsible for the supply of equipment etc. to other Departments

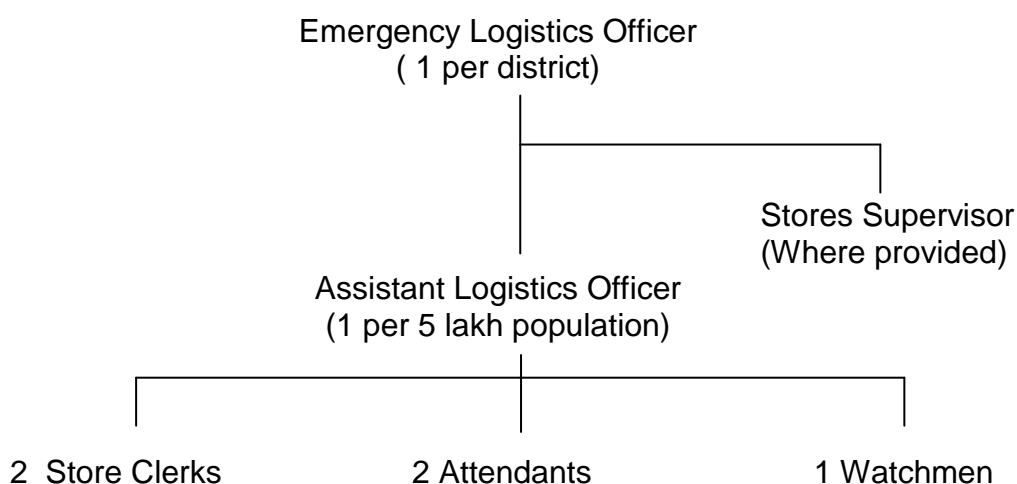
under the State Government. He should place an order after obtaining the necessary approval.

- In case of equipment which is in short supply within the State and has to be obtained from other parts of the country or from abroad, the Director of Civil Defence should approach the Government of India. The Government of India will receive such indents from the various States and co-ordinate their procurement and supply. Where necessary, the Government of India will make arrangements to keep Civil Defence equipment in reserve and supply them to the States at the time of need.

### Organization

The State Governments should appoint, under the Director of Civil Defence, a Deputy Director (Logistics) to plan and direct the State's Civil Defence Logistic requirements. The Deputy Director (Logistics) should be assisted by supervisors and storekeepers for maintenance and serviceability of equipment.

The organization of Emergency Logistics Service under the Civil Defence Controller shall be as follows:



A reserve of 25 per cent of the personnel should be provided.

***The official procedures for organizing the emergency logistics service must follow the rules and regulations framed from time to time by the district authority and utilize personnel already working in the area.***

### Annexure-I (Chapter-XII)

## EMERGENCY LOGISTICS SERVICE

S.No.	Items	Quantity
1.	<b>Personal Equipment:</b> <ul style="list-style-type: none"> <li>• Helmet (Fibre glass in blue colour)</li> <li>• Rechargeable Electric Torch</li> <li>• Whistle with lanyard</li> <li>• Water Bottle</li> </ul>	1 each 1 each 1 each 1 each